



ADOPT

A VIRGINIA TULIP TREE



CHÂTEAU DE VERSAILLES

RESTORATION OF THE QUEEN'S GROVE

EN.CHATEAUVERSAILLES.FR/SUPPORT-VERSAILLES

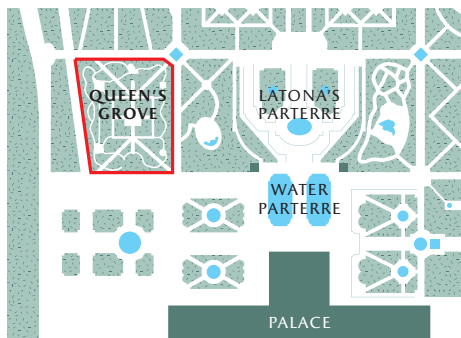
TOGETHER,
LET'S RESTORE



THE QUEEN'S GROVE

"The Queen's Grove is a unique garden. I believe the only way to make it more pleasant and increase the space is to turn it into a Grove in the modern style, to introduce all the foreign trees that have a certain appeal. This space requires artistic variety in the shapes of the trees and their leaves, the colour of the flowers, the period when they will be in bloom, the different shades of foliage..."

Gabriel Thouin, landscape architect, 22 October 1775



A garden reserved for Queen Marie-Antoinette

Created in 1776 to replace the Maze Grove, this ornamental garden bordering the Orangery Parterre was made especially for Queen Marie-Antoinette so that she could have somewhere secluded to walk that was away from the many visitors to the Palace. The design reflects the taste at the time for landscaped gardens, combining the precision of the French formal layout, which was so popular at the French Court, with the twists and turns of the walks inspired by the new English-style gardens. In 1784, it was the backdrop for the night-time meeting between Cardinal Rohan and an imposter posing as Marie-Antoinette, a key episode in the affair of the Queen's Diamond Necklace.

THE VIRGINIA TULIP TREE

This was Queen Marie-Antoinette's favourite tree, which she also had planted in her gardens at Trianon. The Virginia tulip tree (*Liriodendron tulipifera*) is native to the southern and eastern regions of the USA. Introduced into France at the beginning of the 18th century, this majestic tree can live for up to 500 years and usually grows to a height of 40 to 60 metres. It is distinct for its heavily perfumed tulip-shaped flowers and broad leaves, which turn red and gold in autumn.

Some rare and precious species

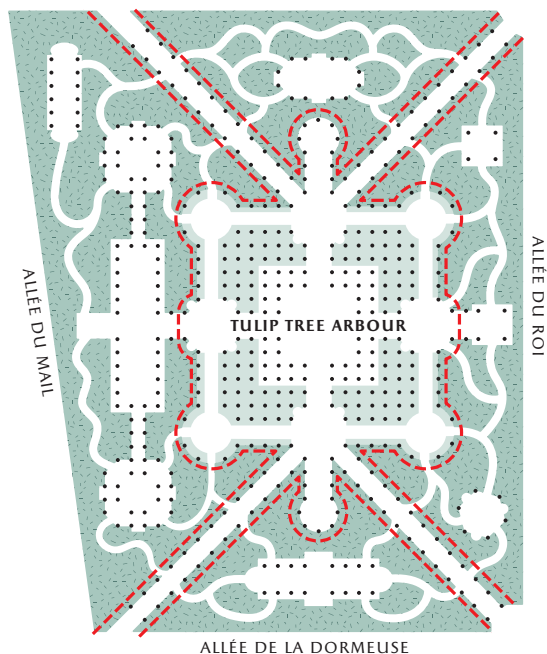
The Grove was a flower garden with predominantly North American varieties newly introduced into France, like the Virginia tulip tree, the white fringe tree and the Carolina silverbell. The tulip trees were arranged in a regular pattern in the central section, creating a veritable room of greenery. Around the outside, the surrounding vegetation comprised a variety of species of trees and shrubs, all flowering at different times and in succession. Four main alleys were ideal for shaded strolls among the flowers, while smaller winding walks led to arbours of plant life with wooden benches.



PARTICIPATE IN THE RESTORATION



OF THE QUEEN'S GROVE



--- Sector boundary

The tulip trees have been planted in fall/winter 2019

The Queen's Grove deteriorated considerably during the 19th and 20th centuries, and today it is a mere shadow of what it once was. Although it still retains most of its original layout, the walks with their imposing foliage have become commonplace paths and the botanical diversity has gone, giving way to uniform bushes. When the Grove is restored, it will once again have the rich variety of plant life that the Queen knew and the paths will be laid out as they were at that time. The central square has already been replanted with Virginia tulip trees and the access paths will again be bordered with trees and flowering shrubs (eastern redbud, Virginia bird cherry, rowan, etc.). The arbours on the fringes of the grove will be decked with staghorn sumac, white fringe trees and laburnum, etc.

HOW CAN I TAKE PART?

By adopting a Virginia tulip tree
or making a contribution
- financial or in skills - to the
restoration of the plants in the
Queen's Grove.

To advise you:

mecenat@chateauversailles.fr

Marion Hugues-Andrieu
+ 33 (0)1 30 83 71 93

Oriane Sarda
+ 33 (0)1 30 83 77 70

Adopt a Virginia tulip tree...

- To mark a special event
- To celebrate a birth
- In memory of a loved one
- To mark your attachment to the Palace of Versailles and ensure its future

Whether you are a private individual or a company, you can make a donation and adopt one or more tulip trees. Donations can be made by wire transfer or credit card, by completing and signing the form overleaf.

How much does an adoption cost?

It costs €1,500 to adopt a tulip tree.

If you are an American taxpayer, donations entitle you to a tax deduction according to Article 501 (c) of the US Internal Revenue Code. Please contact us for more information.

WHAT WILL YOU RECEIVE IN RETURN FOR YOUR DONATION?

FOR INDIVIDUALS

Adoption certificate

You will receive an adoption certificate inscribed with your name or that of the person to whom you want to dedicate it.

Acknowledgement

Your name or that of the person of your choice will be included in the list of patrons to be placed in the Queen's Grove.

'1 year in Versailles' card

You will receive a '1 year in Versailles' card granting unlimited access to the Palace for one year.

Invitation to the official inauguration

When the planting in the Queen's Grove has been restored, you will be invited to the official inauguration to mark the completion of the project.

FOR COMPANIES

Adoption certificate

You will receive an adoption certificate inscribed with the name of your company.

Acknowledgement

The name of your company will be included in the list of patrons to be placed in the Queen's Grove.



'1 year in Versailles' card

One or several '1 year in Versailles' cards granting unlimited access to the Palace for one year can be given to you as a patronage benefit in return for your donation.

Admission tickets

Your company can benefit from complimentary priority admission tickets to visit the Palace and Estate of Versailles during public opening hours.

Photo rights

You will be licensed to use the Palace's photographs showing the tulip trees in their setting to promote the patronage operation and for your corporate communication (annual reports, greetings cards...).

Site visits

You will be able to follow all the important stages of the restoration of the Queen's Grove.

Invitation to the official inauguration

When the planting in the Queen's Grove has been restored, you will be invited to the official inauguration to mark the completion of the project.

Provision of spaces

You will be able to benefit from free use of spaces within the Palace to host public relations events (prestige tours, cocktail parties, dinners...).

Patronage benefits are granted to a maximum value of 25% of the amount of the donation.



I WANT TO TAKE PART

in the restoration of the Queen's Grove

☐ By adopting a Virginia tulip tree = €1,500

☐ By adopting Virginia tulip trees = x €1,500 =

Title Surname Forename

Apart Building

No. and street PO Box or locality

Postcode City/Town Country

Telephone Date of birth

Email Date

Please return this form to the following address
(or by scan to mecenat@chateauversailles.fr) :
Château de Versailles - Service Mécénat - RP 834
78008 Versailles cedex - FRANCE

You can pay by wire transfer in euros to the EPV's account whose
references are listed hereinafter, or by credit card over the phone at
+ 33 1 30 83 78 39

Account holder : **Agence comptable du Musée, Château & Domaine National de Versailles**
Château de Versailles — 78 008 Versailles Cedex

Domiciliation Bank Code Sort Code Account Number RIB Key
Trésorerie Générale des Yvelines 10071 78000 00001003986 61

IBAN FR 76 1007 1780 0000 0010 0398 661 **BIC TRPUFRP1**

Acknowledgements

☐ I wish to remain anonymous ☐ I would like my name to be listed among the donors to the Palace of Versailles or I dedicate this gift to**:

Title Surname Forename

* Public Institution of Versailles

** You can dedicate this gift to the memory or in honour of the person of your choice. It is the name of this person that will be included in the list of acknowledgement of donors to the Queen's Grove. For more information, please contact the Patronage Department: +33 (0)1 30 83 71 93 / 77 70 — mecenat@chateauversailles.fr