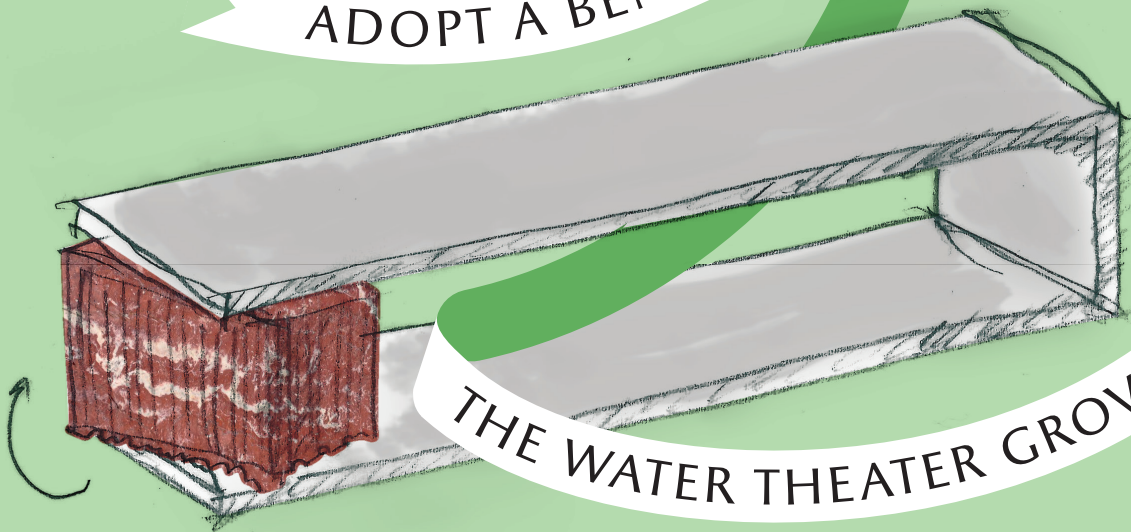


ADOPT A BENCH IN



THE WATER THEATER GROVE

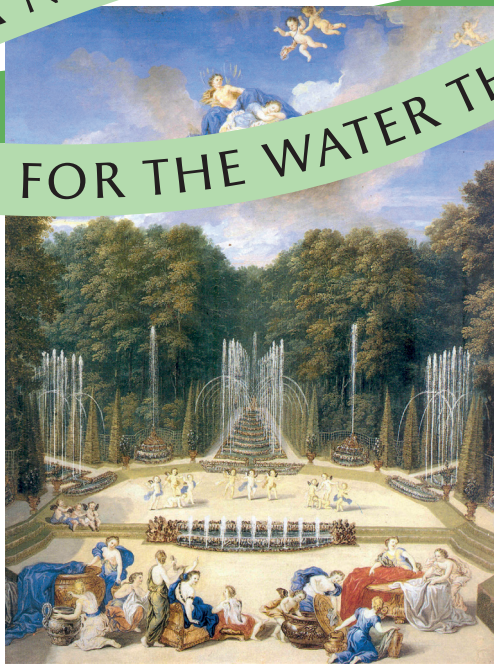


CHÂTEAU DE VERSAILLES

**DESIGN AT THE HEART OF VERSAILLES**

EN.CHATEAUVERSAILLES.FR/SUPPORT-VERSAILLES

# A NEW LEASE OF LIFE FOR THE WATER THEATER GROVE



The Water Theater Grove was built by André Le Nôtre between 1671 and 1674 and originally contained a large number of fountains, whose water jets contrasted playfully with the layout of the plants and trellises. The garden was completely destroyed in 1775, and in order to bring it back to life the palace of Versailles has opted for a contemporary design, with the conviction that the gardens are

able to accommodate both ancient landscape design and modern creations which respect the spirit of the location. The project by Landscape Designer Louis Benech, featuring fountain sculptures by Jean-Michel Othoniel, was chosen after an international competition, marking a new stage in the restoration of the gardens of Versailles.

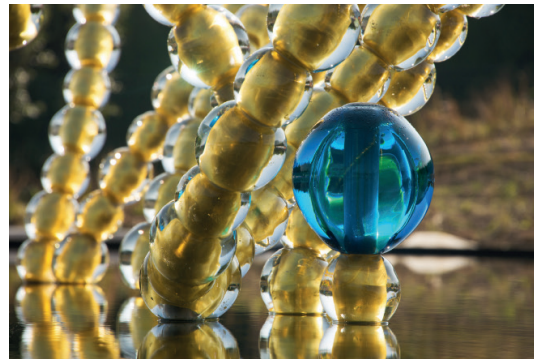
*"I wanted something modern and simple for the benches in the grove. I sketched an idea and decided to combine a traditional material with a very modern one. I chose red Languedoc marble, a type of marble that can be found everywhere in Versailles, because I wanted a noble material that had always been used on this site. I have combined it with ductal, a composite material of fibre-reinforced concrete."* **Louis Benech**



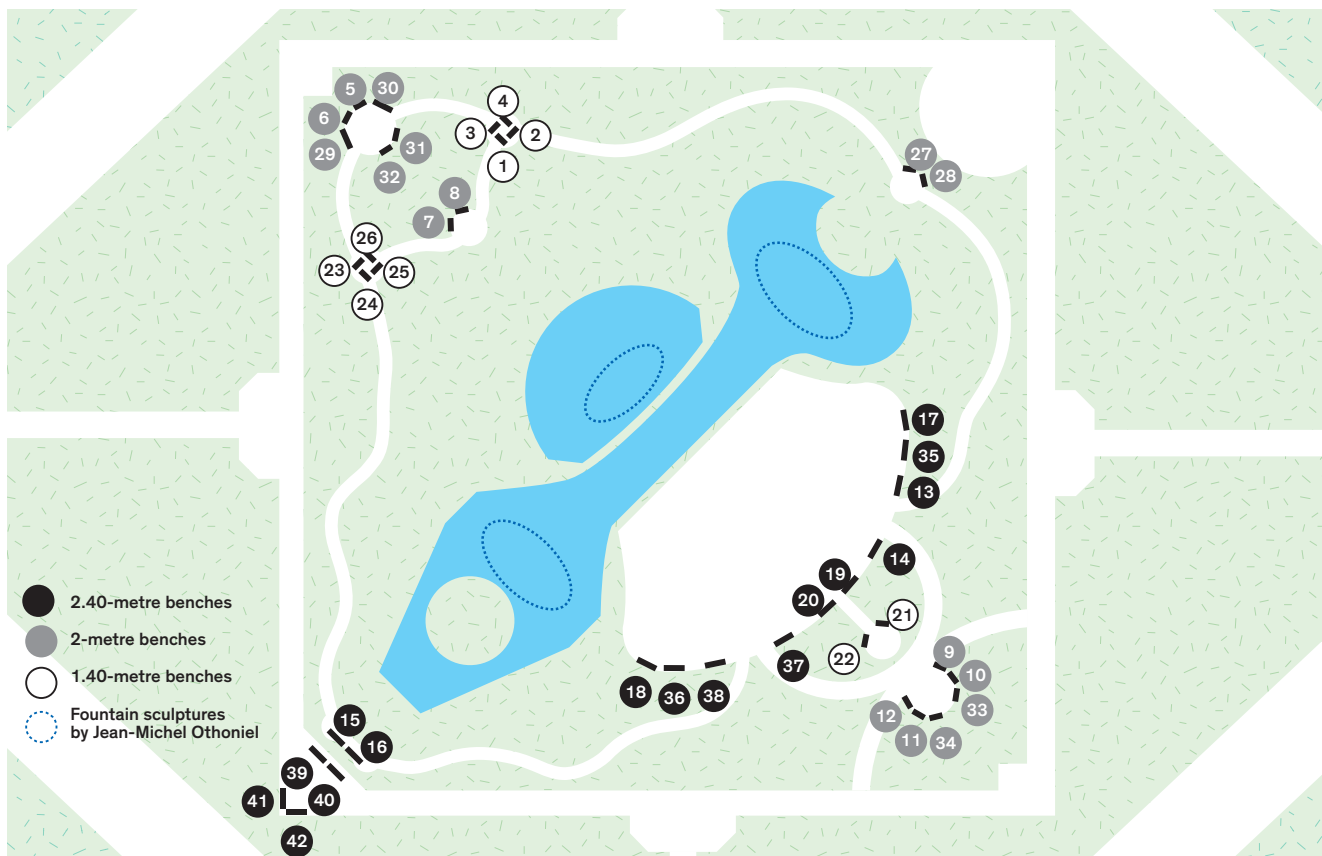
## The Water Theater Grove by Louis Benech and Jean-Michel Othoniel

As a skilled Landscape Designer, Louis Benech has designed the garden in the spirit of Le Nôtre, the famous gardener of the Sun King, and reinterpreted the theater of greenery that Louis XIV wanted. The fountain sculptures by Jean-Michel Othoniel are composed of loops of golden pearls which evoke the art of dancing that was so important to Louis XIV, and

which bathe in a circle of light and water, attracting the eyes of those walking through the grove. The contemporary restoration of the garden has been carried out with respect for its magnificent history and gives the Water Theater Grove a place in the ever-renewed story that makes Versailles magical.







PLAN OF THE POSITION OF THE BENCHES IN THE WATER THEATER GROVE

BENCHES,

PLACES TO REST AND CONTEMPLATE

THE WATER THEATER GROVE



### **The benches in the Water Theater Grove, between classicism and modernity**

With their simple, refined form, the *Versailles XXI* benches pay tribute to the past and celebrate the present. This was Louis Benech's aim when he designed them, bringing together different eras and styles. The elegant

and contemporary seat made out of grey concrete complements the fluted leg cut from red Languedoc marble, in reference to the classicism of Versailles.

*"When I was designing the Water Theater Grove I quickly came up with the idea of a Versailles XXI bench, specially made for the location. The aim was to offer visitors and walkers a relaxing break, given that the grove is always open to everyone. The benches are an integral part of the project and their positions were chosen to provide different perspectives of the garden. Along a path, on the edge of the pond, at the foot of a tree... each bench enables visitors to discover a different view of the garden and fountains."*

**Louis Benech**

**A plaque bearing your name or the name of a person of your choice will feature at the foot of the adopted bench.**

# ADOPT A BENCH IN THE WATER THEATER GROVE



## HOW TO ADOPT A BENCH

### Choose your bench

The *Versailles XXI* benches come in three sizes: 1.20m, 2m or 2.40m.

## HOW MUCH DOES IT COST?

Adopting a bench costs €4,500, €5,600 or €6,700, according to the size.

In exchange for your donation you can benefit from a tax reduction of 66% of the sum of your donation for individuals, and 60% for companies.

### Contact the Patronage Department:

Serena Gavazzi, Head of the Patronage Department  
By telephone: +33 (0)1 30 83 77 04  
By email: [serena.gavazzi@chateauversailles.fr](mailto:serena.gavazzi@chateauversailles.fr)

## IN EXCHANGE FOR YOUR DONATION

### FOR INDIVIDUALS

#### Acknowledgements

Your name or the name of the person to whom the adoption is dedicated will feature on a plaque attached to the bench.

#### Photo rights

You will be able to use copyright free photographs of the adopted bench in the setting of Versailles, to create your greetings cards.

#### 'A year in Versailles' card

The 'A year in Versailles' card granting unlimited access to the Palace for a year will be given free of charge to individuals who take part in the campaign.

#### Invitation to the reception in honour of the patrons of the gardens of Versailles

You will meet all the participants in the campaigns including patrons, landscape architects, restorers, gardeners, artists and curators during the Gardens Soirée, an event held regularly in the Palace.

### FOR COMPANIES

#### Acknowledgements

The name of the patron company will feature on a plaque attached to the bench.

#### Photo rights

Patrons can use, free from copyright, photos of the adopted bench in the setting of Versailles for greetings cards and communication concerning the patronage operation and other corporate communication (annual reports, etc.)



#### 'A year in Versailles' card

The 'A year in Versailles' card granting unlimited access to the Palace for a year can be given to patron companies as part of the compensation for their donation.

#### Priority admission

The patron company will benefit from the free provision of priority admission tickets for the Palace and Estate of Versailles during public opening times.

#### Provision of spaces

The patron company will benefit from the free provision of spaces in the Palace to host public relations events (private visits outside of public opening hours, cocktail parties, dinners).

#### Invitation to the reception in honour of the patrons of the gardens of Versailles

You will meet all the participants in the campaigns including patrons, landscape architects, restorers, gardeners, artists and curators during the Gardens Soirée, an event held regularly in the Palace.

*Compensation is granted for up to 25% of the amount of your patronage.*